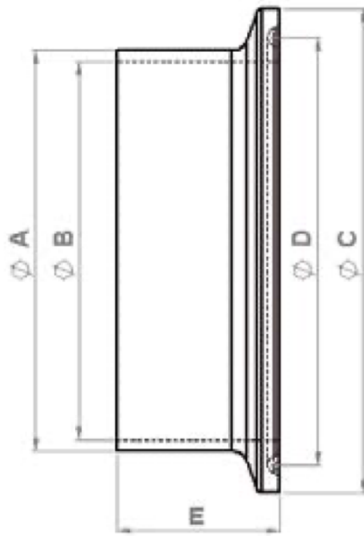


**iQ parts**  
IQ-PARTS-SHOP.COM



**SPECS &  
INFORMATION**

**Ferrules DIN32676 sched. C Short (KK)**  
**Material: AISI 316L (1.4404)**  
**Surface acc. to Hygiene Class H3**  
**Inner: <0,8 µm, Outer: <1,6 µm**



Sched. C DN Nominal Size	Tube OD A	Tube ID B	Flange OD C	Groove D	Short (KK) E	Item-No.
1/4"	6,35	4,57	25,0	20,2	12,7	20414000
3/8"	9,53	7,75	25,0	20,2	12,7	20414011
1/2"	12,7	9,40	25,0	20,2	12,7	20414015
3/4"	19,05	15,75	25,0	20,2	12,7	20414025
1"	25,4	22,10	50,5	43,5	21,5	20414100
1 1/2"	38,1	34,80	50,5	43,5	21,5	20414150
2"	50,8	47,50	64,0	56,5	21,5	20414200
2 1/2"	63,5	60,20	77,5	70,5	28,0	20414250
3"	76,2	72,90	91,0	83,5	28,0	20414300
4"	101,6	97,38	119,0	110,0	28,0	20414400
6"	154,0	150,0	167,0	156,5	28,0	20414600
6"	152,4	146,86	167,0	156,5	28,0	20414601
6" (US SIZE)	154,0	147,0	167,0	156,5	21,5	20414602



info@iq-parts.nl  
Harsweg 34A  
2461 EZ Ter Aar  
T +31 252 624 126  
The Netherlands